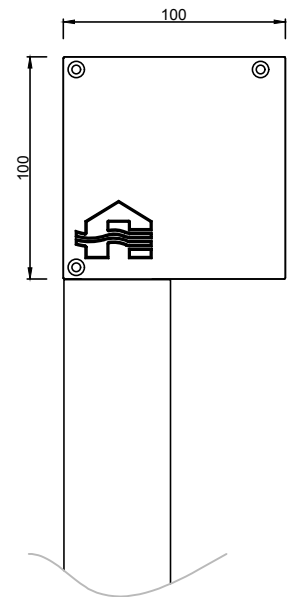
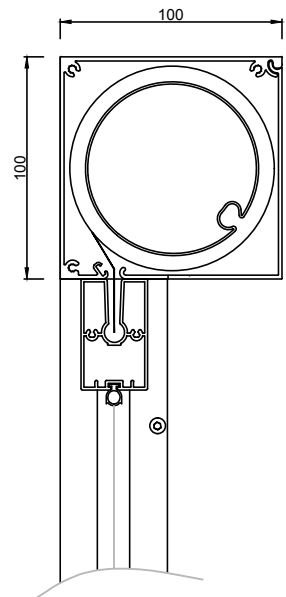


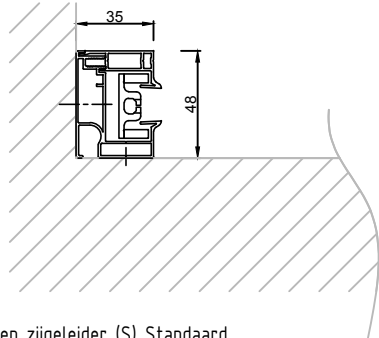
Zijaanzicht
 Vue de côté
 Side view
 Seitenansicht
 Vista lateral



Doorsnede
 Section
 Cross section
 Section
 Sección

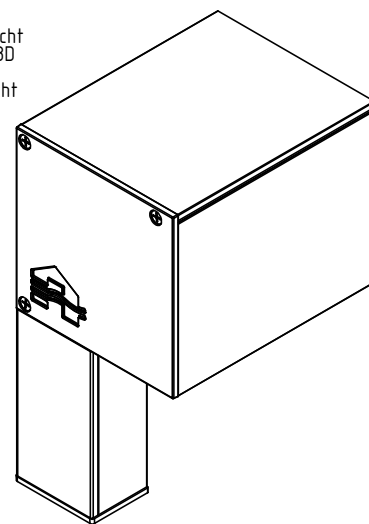


Bovenaanzicht
 Vue de dessus
 Top view
 Obenansicht
 Vista desde arriba



Open zijgeleider (S) Standaard
 Coulisse ouvert (S) Standard
 Open side channel (S) Standard
 Seitenführung offen (S) Standard
 Guía lateral abierta (S) Estándar

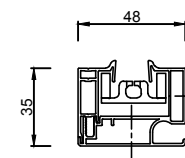
3D aanzicht
 Vue en 3D
 3D-View
 3D-Ansicht
 Vista 3D



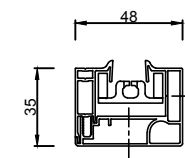
CF2

CF1

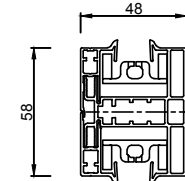
Afgewerkte hoogte
 Hauteur finie
 Finished height
 Fertige Höhe
 Altura acabada



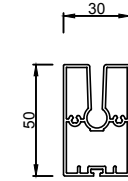
Open zijgeleider (S) Standaard
 Coulisse ouvert (S) Standard
 Open side channel (S) Standard
 Seitenführung offen (S) Standard
 Guía lateral abierta (S) Estándar



Gesloten zijgeleider (G)
 Coulisse fermée (G)
 Closed side channel (G)
 Seitenführung geschlossen (G)
 Guía cerrada (G)



Koppel zijgeleider (K)
 Coulisse d'accouplement (K)
 Coupling side channel (K)
 Koppel-Führung (K)
 Guía lateral de acoplamiento (K)



Onderlat square
 Barre de charge square
 Bottom rail square
 Die Endschiene square
 Perfil contrapeso square

This drawing is property of NV RENSON, and may not be copied or shown to third without written permission.

Montagesituatie 6 - voorbouw voor het raam binnen
 Montage 6 - avant corps: devant le châssis à l'intérieur
 Installation method 6 - surface-mounted: inside, in front of the window
 Einbauweise 6 - vorbau: drinnen vor dem rahmen
 Tipo de montaje 6 - montaje delante de la ventana en el interior



Industriezone "Flanders field"
 8790 Waregem (Belgium)
 Tel. 056/62.71.11 Fax. 056/60.28.51

Drawn
 msple

Date
 2/10/2017

Scale
 1/3

Fixscreen® 100^{EVO} Square

Version
 1

Formaat
 A3

MS6/M6/EW6/IM6/TdM6

Page
 1/1

